

SAFETY GUIDE

WARNING - Before using, read these user's manuals of this product to ensure correct usage through understanding. After reading, store them in a safe place for future reference. Incorrect handling of this product could possibly result in personal injury or physical damage. The manufacturer assumes no responsibility for any damage caused by mishandling that is beyond normal usage defined in these manuals of this product.

- You will be using sharp tools. Always use personal protective equipment such as gloves and safety glasses to avoid the risk of injury.
- Make sure the floor you step on is dry, free from any liquids such as oil and water when assembling this product. Use anti-slip shoes to avoid falling due to slips.
- Make sure there is adequate lighting when doing the assembly. When assembling keep it away from children and pets.

EQUIPMENT FOR ASSEMBLE

Not included in the item package.

- Safety Gloves and Safety Shoes
- Electrical Hand Drill

It is recommended that you have knowledge of assembly are helpfull.

SAFETY PRECAUTION

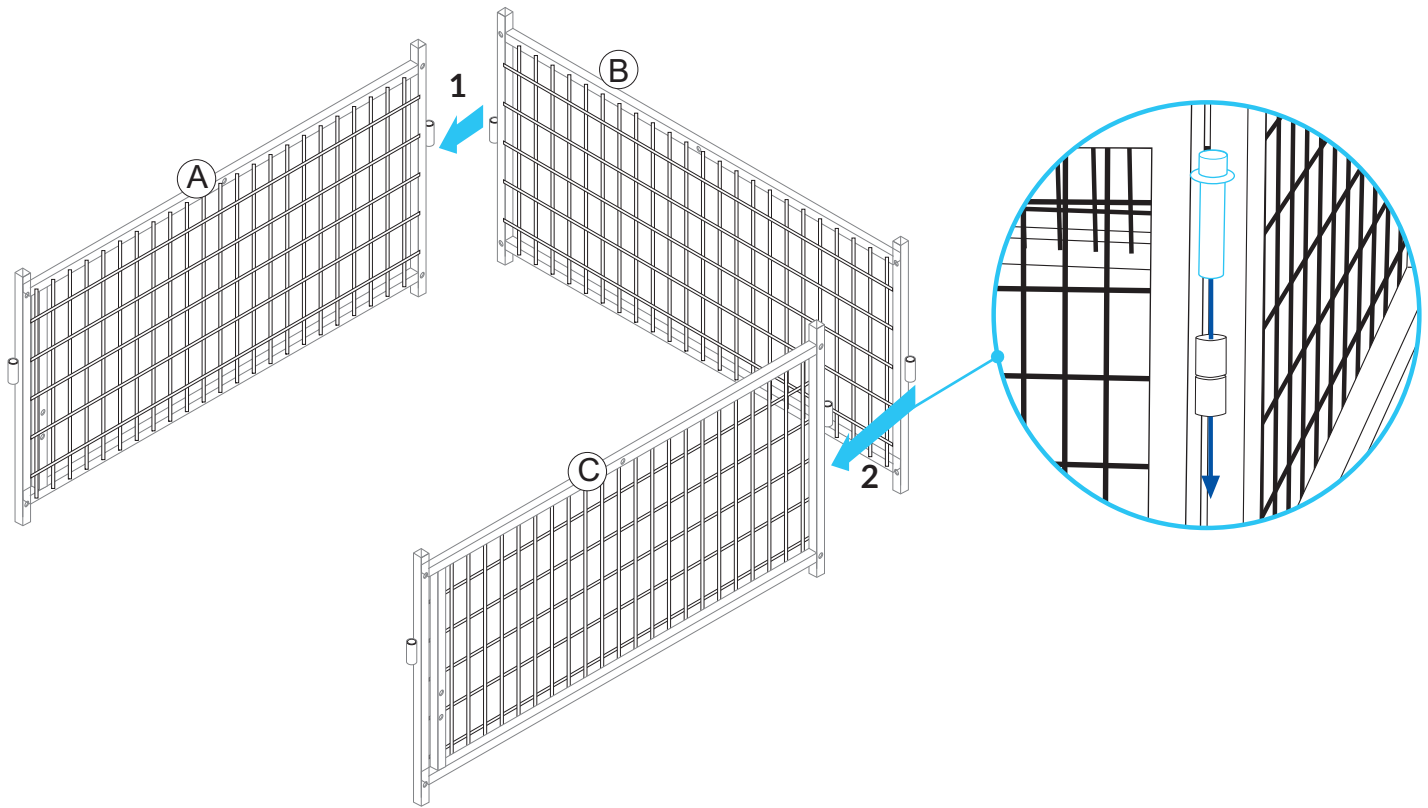


CHICKEN CONDOS

833 West 27th Street Ogden, Ut 84401
Phone : (801) 621-4024 Fax : (801) 621-4353
E-Mail : k9kennelsstore@gmail.com

Assembling Instruction

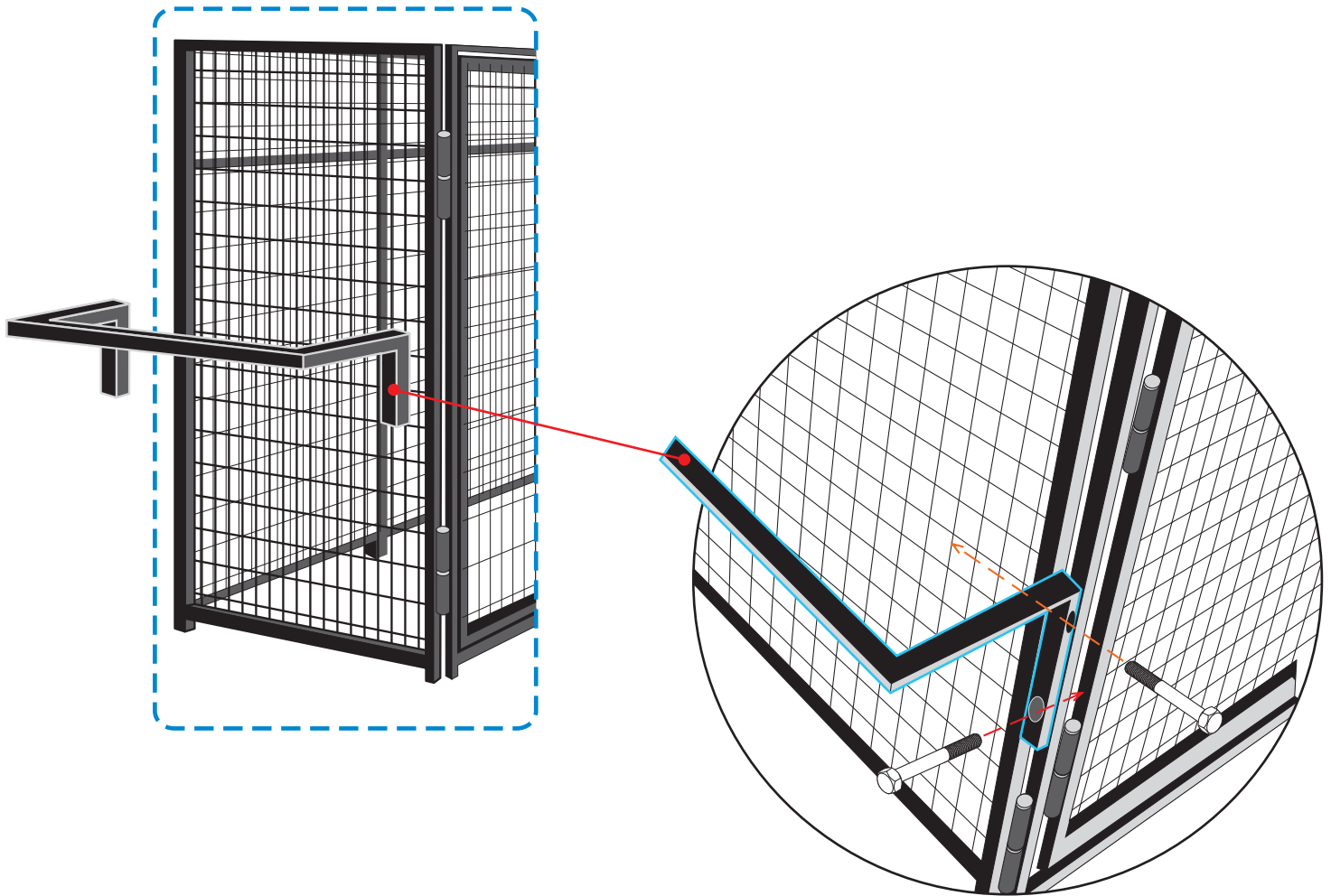
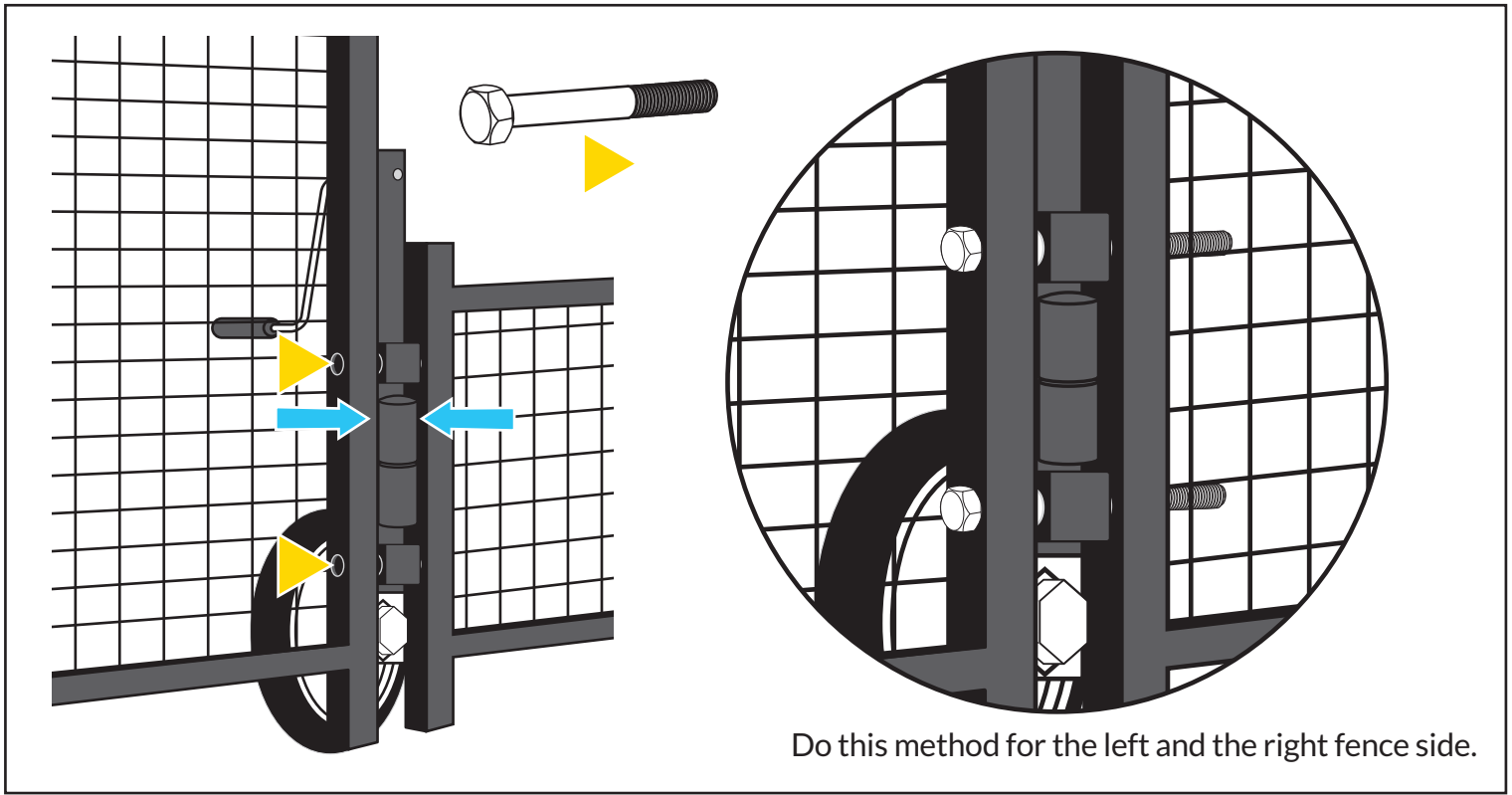
Connect the sides of parts A and C so that they form an angle of 90 degrees, insert the metal hinge center in the hinge hole provided. Do the same thing between parts B and C so that they form like the letter U.



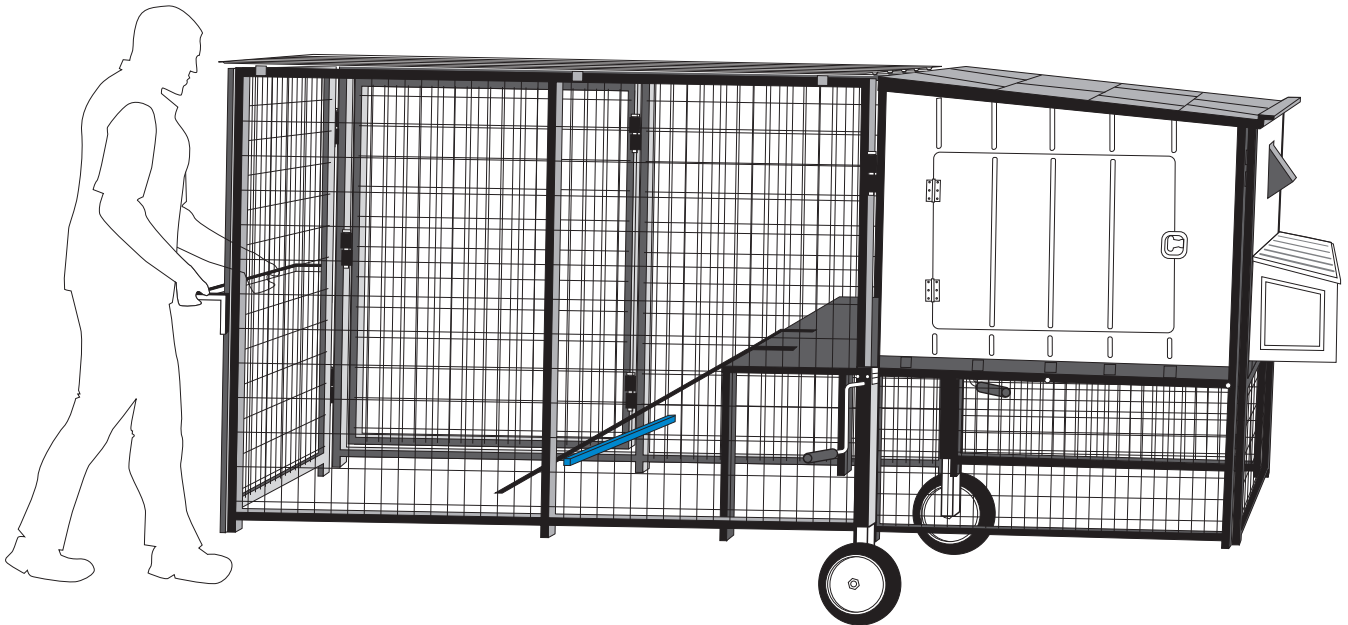
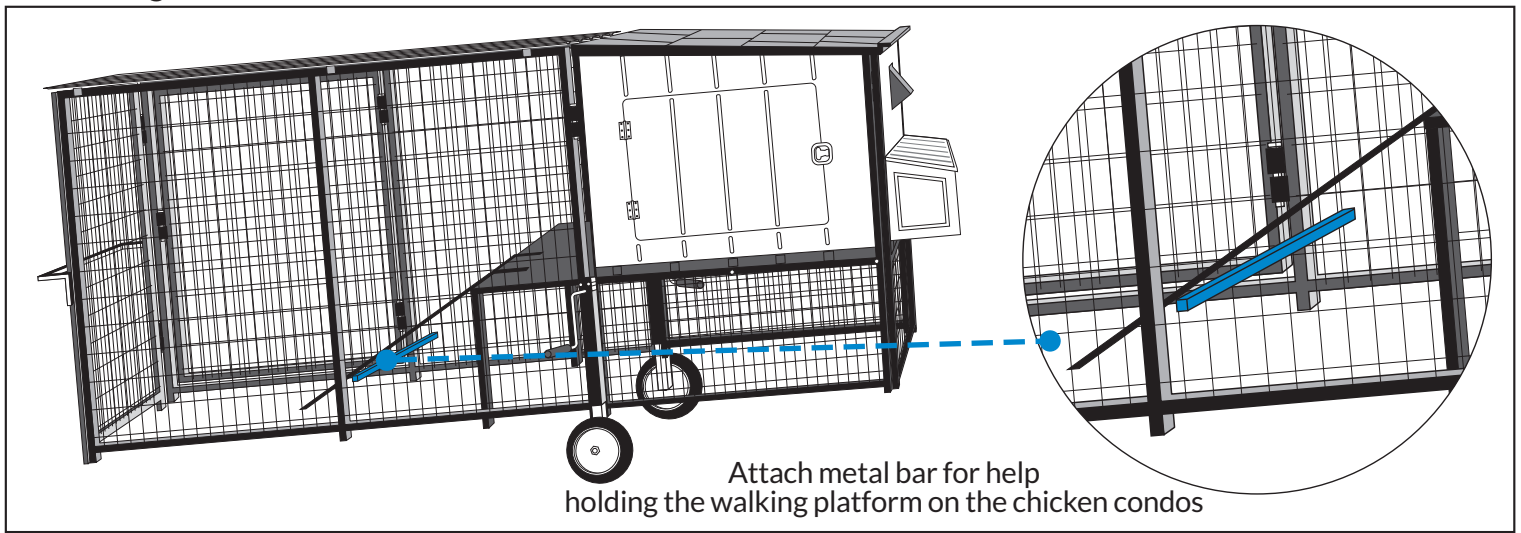
Prepare the run fence and stand it closely to base fence. Make some gaps between it to install the wheels



Assembling Instruction



Assembling Instruction



The Chicken Tractor is ready to use.
-- Thank You --